

Village of



CURTISS

WISCONSIN

“Curtiss is a friendly small village, waiting to welcome you to our community.”

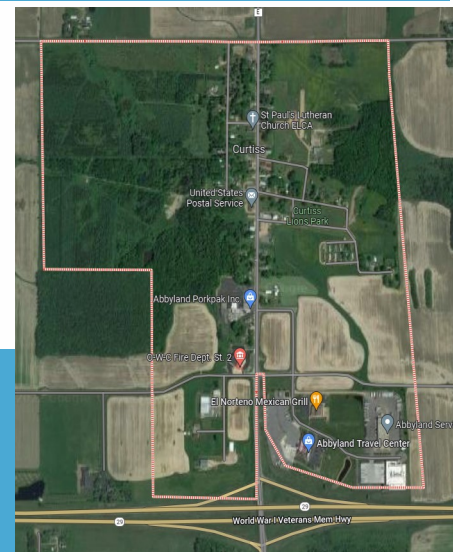
Curtiss is located on the Yellowstone Trail. Conveniently located half way between Wausau and Eau Claire along State Highway 29. The Village has a population of around 350 residents. We may be small, but we have business, industry and much to offer in our area.

The Village of Curtiss has a village community center (formerly the Curtiss School, built in 1910), Curtiss Memorial Park and Village park which has a shelter with kitchen, modern facilities and a playground.



There are many recreational opportunities within a short distance of Curtiss, in Clark, Taylor & Marathon Counties. Curtiss is also located right on some of Wisconsin’s well groomed snowmobile trails, with easy access to hundreds of miles of trails.

Curtiss is home to numerous small businesses as well as a large processing facility, Mexican restaurant & banquet hall and a large 24 hour truck stop & restaurant.



Curtiss Clerk:

915 Meridian St, P.O. Box 97, Curtiss, WI
Ph: 715-223-6226

curtissclerk@gmail.com, www.villageofcurtiss.org



Businesses in Curtiss & Surrounding Area

Businesses in the heart of Curtiss:

Abbyland Family Restaurant
Abbyland Porkpak Inc
Abbyland Service Center & Truck Wash
Abbyland Truck Stop/ C- Store
Boomtown Storage
Curtiss Alliance Church
El Norteno Banquet Center
Exit 127 Storage
Midwest Sidewalls, LLC
Real Fence LLC
St Paul's Lutheran Church- ELCA
Walnut Creek Foods
Wisconsin's Drink, LLC

Curtiss has the friendly living experience your looking for!

Nearby Community Businesses:

Brubaker Ag Equipment LLC
Bruce Mound Builders LLC
Cloverdale Country Store
Cloverdale Equipment LLC
Country Fresh Produce
Dales Quality Spray Painting & Whitewashing
Derrico Logistics LLC
Double L Greenhouse
Hoover Hydraulics
Hoover Metals
Maki Welding Services LLC
Nasonville Dairy Cheese Store
Oak Grove Custom Kitchen
Pople River Hydraulics
Rainbow Reflections Discount Groceries
Schindler Auctions
Sensenig Construction
Time Flies Bar & Grill
Valentine Garden & Greenhouses
Zimtech Directional Boring



Clark County Economic Development & Tourism Bureau

301 N Main St., P.O. Box 236, Loyal, WI 54446

715-255-9100, info@clarkcountyedc.org, www.clarkcountywi.org